

# Pinner Road

## (Bessborough Road to Headstone Lane)

### Local Safety and Controlled Parking Zone Schemes

**Important consultation document this will affect you. This is your opportunity to comment. Your views matter.**

**We you need your views as this consultation exercise is intended to find out if there is broad public support for the proposals set out in this leaflet.**

The proposals are shown on the enclosed plan. You may also like to view the large-scale plans of the proposals, which will be displaced at:

**Harrow Council, Civic Centre 1, Station Road, Harrow, Middlesex HA1 2XA**



**Please return your questionnaire by 19th September 2008**

#### Introduction

As part of our continued commitment to improve road safety the council is proposing to implement a local safety scheme in Pinner Road. In addition to the local safety scheme we are also proposing new parking controls and measures to assist cyclists.

We are therefore seeking your views on the proposals contained in this leaflet.

#### Local Safety Scheme

The proposals are designed to improve road safety for pedestrians, cyclists and motorists in order to reduce the number of road accidents involving personal injuries.

**Between January 2004 and December 2006** there were **26** recorded traffic

accidents involving personal injury along Pinner Road.

We have studied the accident data and are proposing safety measures that will help to

reduce the number of personal injury accidents. Transport for London (TfL) will pay for the local safety scheme, which we hope to build before March 2009.

The proposed measures are shown on the plan therein.

#### Parking

There are greater problems with parking, traffic congestion and safe access largely due increases in car ownership. We are consulting on measures to address concerns raised by local people:-

Double yellow lines are proposed at and near junctions to prevent obstructive parking

Increasing the period when waiting and loading restrictions apply along Pinner Road

Providing pay and display parking in the first section of the side roads by the shops for customer parking which we could not provide in front of the shops.

Possible new controlled parking zone in the county roads east of The Gardens to provide better parking opportunities for local people.

The scheme would be funded by Harrow Council

#### Additional Information

We are proposing waiting restrictions (double yellow lines) for a distance of 10m at all junctions in Pinner Road between Bessborough Road and Headstone Lane. This will improve drivers' visibility and road safety for all road users.

#### Your views are important to us

Please return your comments on these proposals by 19th September 2008 by using the self addressed envelope. Postage is pre-paid. Alternatively you can submit your questionnaire on line by visiting [www.harrow.gov.uk/trafficconsultation](http://www.harrow.gov.uk/trafficconsultation) and follow the links to Pinner Road Local Safety Scheme.

#### What happens next?

We will consider all the comments returned to us and if appropriate, modifications may be made and the scheme proposals. However, due to the large number of responses anticipated we will not be able to reply to individual comments.

It is anticipated that the construction works, apart from the parking bays, will be completed by March 2009. The implementation of the parking bays and the remainder of the Controlled Parking Zone (CPZ) scheme is scheduled for 2009-10.

#### Further information

If you would like further information regarding the local safety scheme

Please contact:

Carlos Foster- Project Engineer

Tel: 020 8424 7591

Email: [carlos.foster@harrow.gov.uk](mailto:carlos.foster@harrow.gov.uk)

If you would like further information regarding the Controlled Parking Zone (CPZ) scheme and Waiting Restrictions please contact:

Stephen Freeman- Project Engineer

Tel: 020 8424 1437

Email: [stephen.freeman@harrow.gov.uk](mailto:stephen.freeman@harrow.gov.uk)

PO Box 39

Harrow Council

Civic Centre

Station Road

Harrow

Middlesex HA1 2XA

Picture To Come??

Eastbound vehicle activated signs are proposed to reduce vehicle speeds. It is proposed to install a pedestrian refuge to assist pedestrians to cross the road safety in two halves

#### 7) At Pinner Road/ Station Road junction – carriageway widening.



It is proposed to widen the carriageway to create two approach lanes to increase capacity at the junction.

#### 8) Pinner Road between Pinner Road/ Station Road junction and Pinner Road/George V Avenue/Headstone Lane – side road ahead sign.



We proposed to erect two 'side road ahead' warning signs (one in each direction) on the approach to Southfield Park.

Please call the number below for a large print version of this document, or a summary of this document in your language.

**Albanian** Nëqoftëse gjuha Angleze nuk është gjuha juaj e parë, dhe keni nevojë për përkthimin e informatave të përmbajtura në këtë dokument, ju lutemi kontaktoni numërin dhënë.

**Arabic** إذا كنت الإنجليزية ليست لغتك الأولى وتحتاج ترجمة معلومات هذا الوثيقة، الرجاء الاتصال على رقم

**Bengali** যদি আপনি বাংলা ভাষায় কথা বলতে পারেন না এবং আপনি যদি এই ডকুমেন্টের তথ্য বুঝতে পারেন না তবে আমাদের সাথে কথা বলতে পারেন।

**Chinese** 如果您主要使用的语言不是英语则需要将这份文档的内容翻译成中文，请拨打相应的电话号码提出翻译要求。

**Farsi** اگر انگلیسی زبان اول شما نیست و شما نیاز به ترجمه اطلاعات موجود در این سند را دارید، لطفاً با شماره و رقم داده‌شده تماس بگیرید.

**Gujarati** જો આપણી મુખ્ય ભાષા અંગ્રેજી નથી તો આ માહિતીઓ અમને અંગ્રેજીમાં જરૂર પડશે. જો તમને અંગ્રેજીમાં જરૂર પડે તો કૃપા કરી જણાવવા નંબર 020 8424 1993 પર કોલ કરો.

**Hindi** यदि आपको अपनी भाषा नहीं आती और आपको इस दस्तावेज़ में दी गई जानकारी का अनुवाद हिन्दी में चाहिए तो कृपया दिए गए नंबर पर कॉल करें।

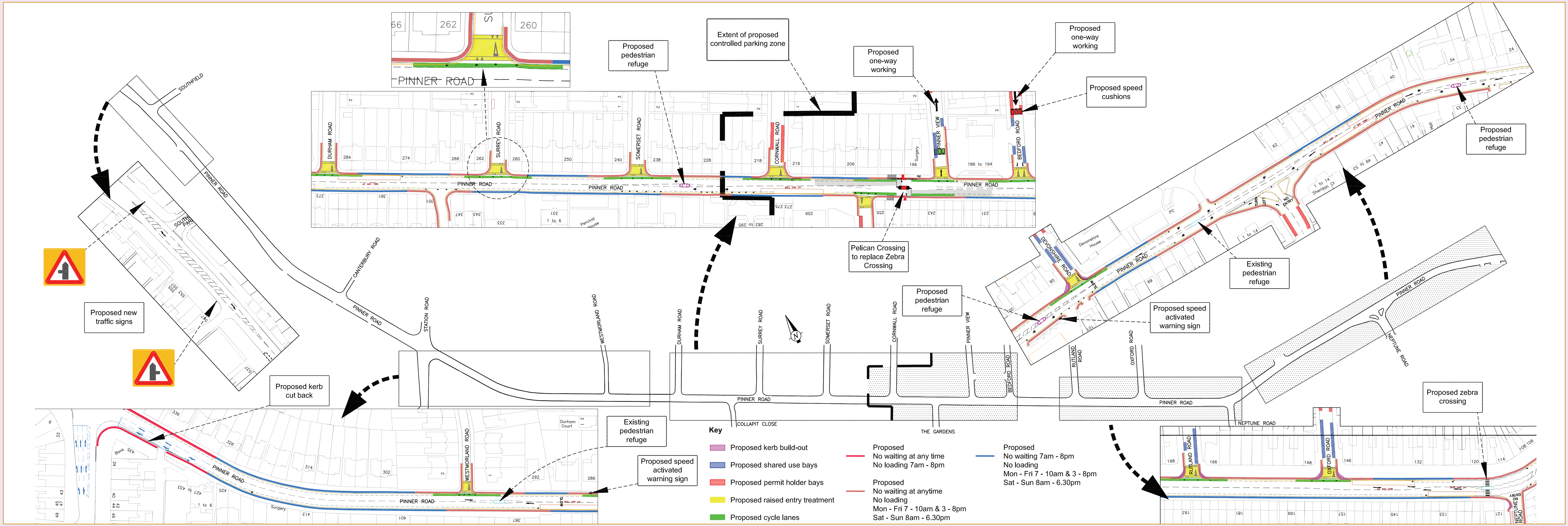
**Punjabi** ਜੇ ਤੁਹਾਡੇ ਮੁੱਖ ਭਾਸ਼ੀ ਭਾਸ਼ਾ ਅੰਗਰੇਜ਼ੀ ਤੋਂ ਵੱਖਰੀ ਹੈ ਤਾਂ ਤੁਹਾਡੀ ਜਾਣਕਾਰੀ ਵਿੱਚ ਬਿੰਨਾਂ ਕਰੀ ਕਿਸੇ ਭਾਸ਼ੀ ਵਿੱਚ ਅਨੁਵਾਦ ਦੀ ਜ਼ਰੂਰਤ ਪੈਣਗੀ। ਜੇ ਤੁਹਾਨੂੰ ਅਨੁਵਾਦ ਦੀ ਜ਼ਰੂਰਤ ਹੈ ਤਾਂ ਕਿਰਪਾ ਕਰਕੇ ਦਿੱਤੇ ਗਏ ਨੰਬਰ 'ਤੇ ਕਾਲ ਕਰੋ।

**Somali** Haddii Ingiriiska aysan ahayn afkaaga koowaad aadna a halkan ahay turjumidda xog ku jirta dokumentiga fidan la xiriir lambarka lagu siiyey.

**Tamil** இந்த ஆங்கில மொழி அல்லாதவர்கள் இதுவரை உள்ள தகவல்களை அங்கிலேயில் அறியவில்லை என்றால் அவர்களுக்கு இந்த தகவல்களை தமிழில் மொழிபெயர்க்கும் தொழிலாளர்களை அணுகவும். தொடர்பு கொள்ளும்போது கீழ்க்கண்ட தொலைபேசி எண்ணை தொடர்பு கொள்ளவும்.

**Urdu** اگر انگریزی آپ کی پہلی زبان نہیں ہے تو آپ کو اس دستاویز میں دی جانے والی معلومات کو اپنی زبان میں سمجھنے کی ضرورت ہے۔ اگر آپ کو اس کی ضرورت ہے تو براہ کرم درج کردہ نمبر پر کال کریں۔

**020 8424 1993**



Proposed new traffic signs

Proposed kerb cut back

Existing pedestrian refuge

Proposed speed activated warning sign

Proposed pedestrian refuge

Extent of proposed controlled parking zone

Proposed one-way working

Proposed one-way working

Proposed speed cushions

Pelican Crossing to replace Zebra Crossing

Proposed pedestrian refuge

Proposed speed activated warning sign

Existing pedestrian refuge

Proposed zebra crossing

Proposed pedestrian refuge